

**WX** Expansion plug with round hook



Description

Application	Steel zinc coated hooks for lightweight interior finish elements and lightweight installations
Type of installation	Pre-fastening installation
Substrate	Concrete, solid clay brick, calcium silicate brick, autoclaved aerated concrete
Material	Sleeve: Polietylene Screw: Zinc-plated low carbon steel

Features and advantages



**Anti-rotation elements** Special lugs and protrusions hold the sleeve in place and prevent its rotation during tightening of the screw

**Short expansion zone**

Enables installation in solid building materials.

**Screw-in installation**

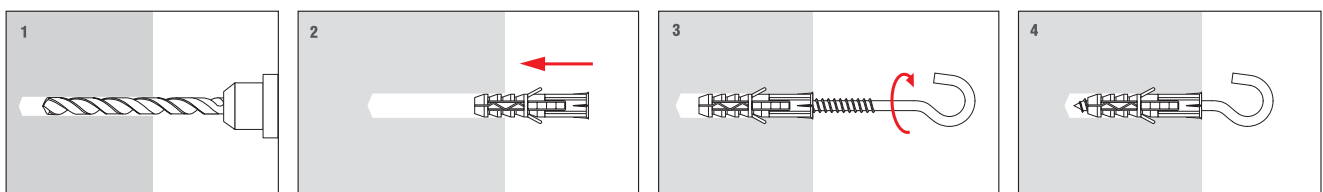
Screw-in installation helps tighten the hook to the required depth.

**Screw - round hook**

Suitable for standard ceiling decorations.



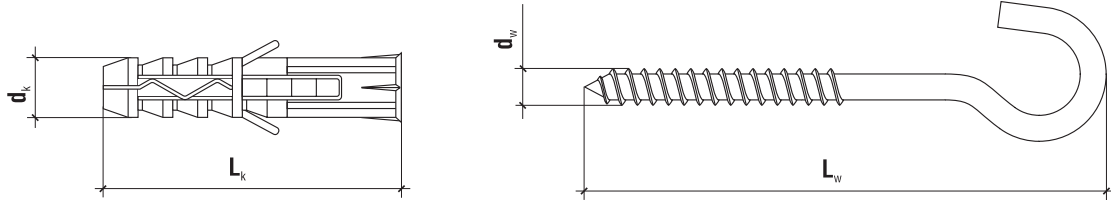
Installation



How to read the code?

<b>WX</b>	<b>06</b>
Type	Diameter

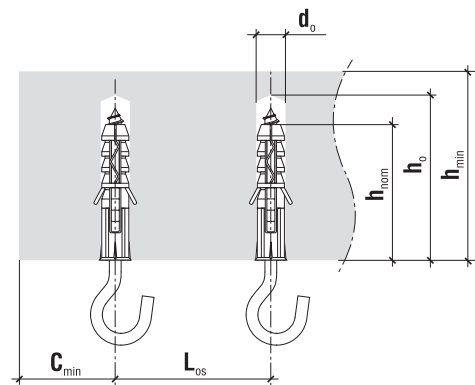
### TECHNICAL DATA



	Code	$d_k \times L_k$ [mm]	$d_w \times L_w$ [mm]	Pcs
<b>ø6</b>	WX-06	6,0 x 30	4,0 x 55	100
<b>ø8</b>	WX-08	8,0 x 40	4,5 x 65	100
<b>ø10</b>	WX-10	10 x 50	5,5 x 90	100
<b>ø12</b>	WX-12	12 x 60	7,5 x 97	100

### TECHNICAL DATA

Parameter	Unit	WX
Plug diameter	$d_k$ [mm]	6/8/10/12
Hole diameter	$d_o$ [mm]	6/8/10/12
Effective anchorage depth	$h_{eff}$ [mm]	30/40/50/60
Depth of drill hole	$h_o$ [mm]	40/50/60/70
Sleeve material	x	PP
Screw material	x	Zinc plated steel
Approval	x	AT-15-9031/2012



### DESIGN PULL-OUT RESISTANCE [kN]

Substrate	WX-6	WX-8	WX-10	WX-12
Concrete C20/25	0.13	0.23	0.28	0.74
Solid clay brick	0.03	0.12	0.16	0.13
Calcium silicate brick	0.05	0.21	0.47	0.61
Autoclaved aerated concrete	x	0.08	0.06	0.18

### SUBSTRATE, MINIMUM THICKNESS, DISTANCE

Plug type	Min. member thickness $h_{min}$ [mm]	Min. edge distance $c_{min}$ [mm]	Min. spacing $L_{os}$ [mm]
WX-6	60	30	60
WX-8	80	40	80
WX-10	100	50	100
WX-12	120	60	120