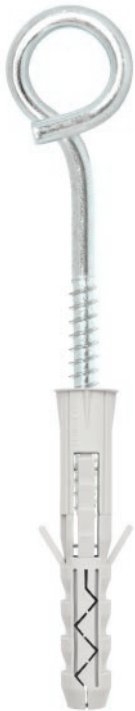


**HX** Plug Ø12 with pig tail hook



AT-15-9031/2012



Description

Plug with pig tail hook

Technical data

Type of installation pre-fastening installation

Substrate concrete, solid clay brick, calcium silicate brick, autoclaved aerated concrete

Sleeve material/protective coating

**PP**  
polypropylene

**Blue zinc**

Features and advantages of the product



**Anti-rotation elements**

Special lugs and protrusions hold the sleeve in place and prevent its rotation during tightening of the screw.

**Short expansion zone**

Enables installation in solid building materials.

**Screw-in installation**

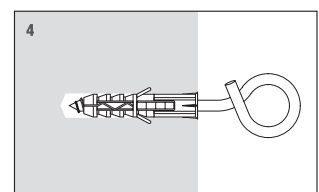
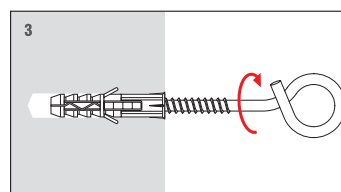
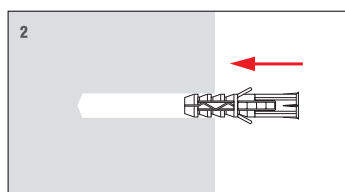
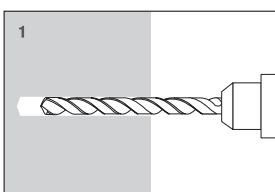
Screw-in installation helps tighten the hook to the required depth.

**Screw - pig tail hook**

Suitable for standard ceiling decorations.



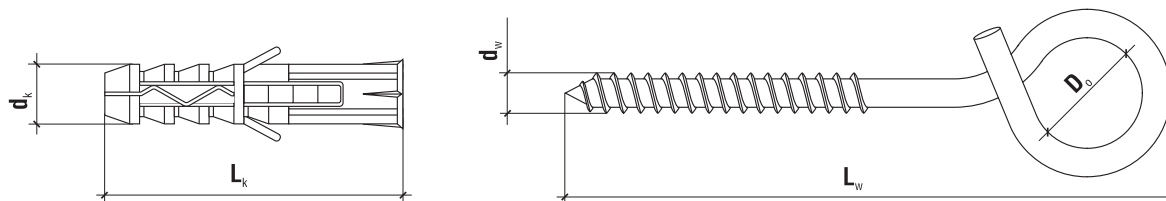
Installation



Product marking

<b>HX</b>	<b>12</b>
Type	Diameter

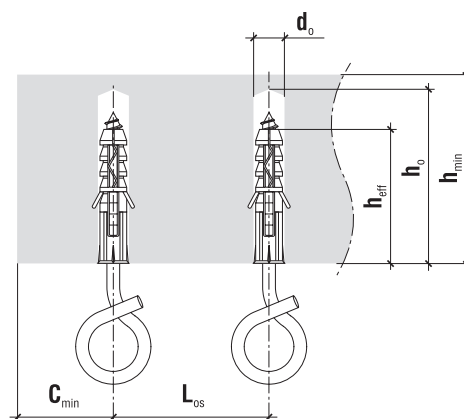
## TECHNICAL DATA



	Code	$d_k \times L_k$ [mm]	$d_w \times L_w$ [mm]	Pcs
<b>ø12</b>	<b>HX-12</b>	12 x 60	8.0 x 120	50

### TECHNICAL DATA

Parameter	Unit	HX
Plug diameter	$d_k$ [mm]	12
Hole diameter	$d_o$ [mm]	12
Effective anchorage depth	$h_{eff}$ [mm]	60
Depth of drill hole	$h_o$ [mm]	70
Sleeve material	x	PP
Screw material	x	Zinc plated steel
Approval	x	<b>AT-15-9031/2012</b>



### DESIGN PULL-OUT RESISTANCE [kN]

Substrate	HX-12
Concrete C20/25	0.74
Solid clay brick	0.13
Calcium silicate brick	0.61
Autoclaved aerated concrete	0.18

### SUBSTRATE, MINIMUM THICKNESS, DISTANCE

Plug type	Min. member thickness $h_{min}$ [mm]	Min. edge distance $c_{min}$ [mm]	Min. spacing $L_{os}$ [mm]
HX-12	120	60	120