

KPD 10/12 Plug Ø10/Ø12 with double-threaded screw (fixing of downpipe clamps)



AT-15-9031/2012



Description

Recommended for fixing of downpipe clamping harnesses, cable containment systems

Technical data

Type of installation push-through installation

Substrate concrete, solid clay brick, solid sand-lime brick, perforated clay brick, autoclaved aerated concrete

Sleeve material / Protective coating

100% nylon

Blue zinc

Features and advantages of the product

< 200 mm >

Screw length

We manufacture screws up to 200 mm long

Long anchorage zone

Helps with the correct installation in most substrates.

Wrench size 10

Helps with the correct installation of double-threaded screw.

Diameter 10 and 12 mm

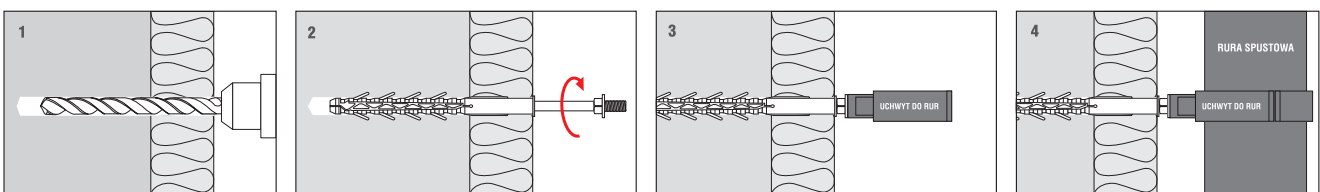
Increased anchor diameter ensures rigid and stable fixing.

Metric thread M8

Metric thread M8 enables installation of most clips and clamps.



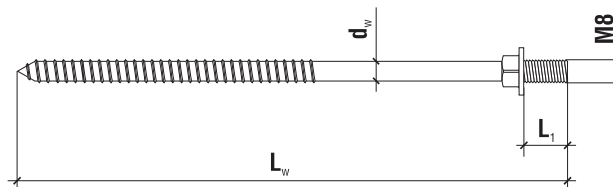
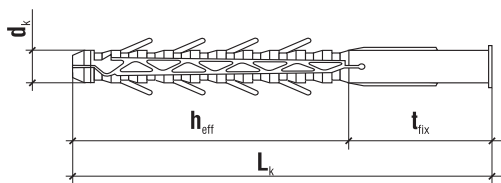
Installation



TECHNICAL DATA

Product marking

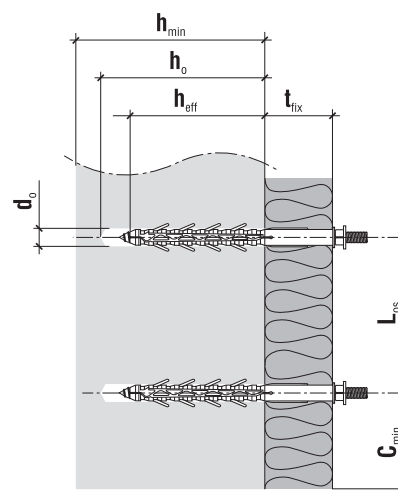
KPD	10	100
Type	Diameter	Length



	Code	$d_k \times L_k$ [mm]	$d_w \times L_w$ [mm]	Max. fixture thickness t_{fix} [mm]	SW-10	Pcs
Ø10	KPD-10100	10 x 100	7.0 x 105	20	SW-10	50
	KPD-10160	10 x 160	7.0 x 165	80	SW-10	50
	KPD-10200	10 x 200	7.0 x 205	120	SW-10	25
Ø12	KPD-12100	12 x 100	8.0 x 105	20	SW-10	25
	KPD-12160	12 x 160	8.0 x 165	80	SW-10	25
	KPD-12200	12 x 200	8.0 x 205	120	SW-10	25

TECHNICAL DATA

Parameter	Unit	KPD 10	KPD 12
Plug diameter	d_k [mm]	10	12
Hole diameter	d_o [mm]	10	12
Effective anchorage depth	h_{eff} [mm]	80	80
Depth of drill hole	h_o [mm]	90	90
Metric thread diameter	D [mm]	M8	M8
Key size	x	SW 10	SW 10
Sleeve material	x	PA	PA
Screw material	x	Zinc plated steel	Zinc plated steel
Approval	x	AT-15-9031/2012	AT-15-9031/2012



SUBSTRATE - MINIMUM THICKNESS, DISTANCE

Substrate	Min. member thickness h_{min} [mm]	Min. edge distance c_{min} [mm]	Min. spacing L_{os} [mm]
Concrete C20/25	160	80	160
Solid clay brick	160	80	160
Solid sand-lime brick	160	80	160
Perforated clay brick	160	80	160
Autoclaved aerated concrete	160	80	160

CHARACTERISTIC PULL-OUT RESISTANCE [kN]

Substrate	KPD 10/12
Concrete C20/25	5.19 / 1.80
Solid clay brick	3.79 / 1.18
Solid sand-lime brick	3.72 / 1.23
Perforated clay brick	0.7 / -
Autoclaved aerated concrete	0.86 / 0.49

