

KPR-12

Frame plug Ø12 for medium-duty applications - nylon



Description

Plastic expansion plug for use with screw

Technical data

Type of installation push-through installation

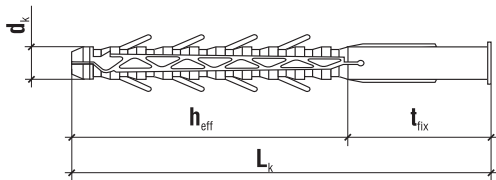
Sleeve material

100% nylon

Features and advantages of the product

Sleeves without screws

For use with screws with a diameter of 8.0 mm



Product marking

KPR	12	100
Type	Diameter	Length

	Code	$d_k \times L_k$ [mm]	Recommended screw diameter d_w	Effective anchorage depth h_{eff} [mm]	Min. depth of drilled hole h_0 [mm]	Pcs
Ø12	KPR-12100	12 x 100	8	80	90	50
	KPR-12120	12 x 120	8	80	90	50
	KPR-12140	12 x 140	8	80	90	50
	KPR-12160	12 x 160	8	80	90	50
	KPR-12180	12 x 180	8	80	90	50
	KPR-12200	12 x 200	8	80	90	50

no technical approval, to be used with screws of 8 mm in diameter