

ZPD

Longitudinal connector for CD 60/27 sections



PN-EN 13964:2005

Description

Used for in-line connections of CD 60/27 steel sections in single or double suspended ceiling grids.

Material: steel sheet Dx51D.


Protective coating

Hot-dip galvanized coating

Features and advantages of the product

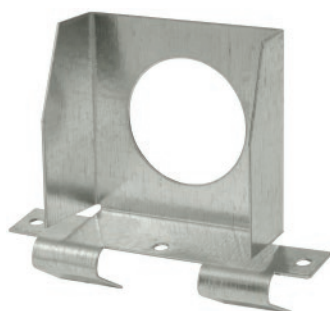
Reaction to fire - Euroclass A1

Durability - A:B Class

Code and size	Steel thickness [mm]	Pcs per 
ZPD-06	0.60	100

ZPP

One-side transverse connector for CD 60/27 sections



PN-EN 13964:2005

Description

Used for angle connections of CD 60/27 steel sections in single suspended ceiling grids.

Material: steel sheet Dx51D.


Protective coating

Hot-dip galvanized coating

Features and advantages of the product

Reaction to fire - Euroclass A1

Durability - A:B Class

Code and size	Steel thickness [mm]	Pcs per 
ZPP-08	0.80	100

RESISTANCE

Code and size	Permissible load F_{dop} [kN]
ZPP-08	0.30