

# HOX

Expansion plug Ø14, Ø16 with eye hook (for scaffolding)



AT-15-9031/2012



## Description

Expansion plug for scaffolding systems with plastic cap

## Technical data

Type of installation pre-fastening installation

Substrate concrete, solid clay brick, calcium silicate brick, autoclaved aerated concrete

## Sleeve material/protective coating

100% nylon

Blue zinc

## Features and advantages of the product



### Anti-rotation elements

Special lugs and protrusions hold the sleeve in place and prevent its rotation during tightening of the screw.

### Nylon sleeve

Nylon sleeve provides for increased resistance and strength

### Eye-bolt

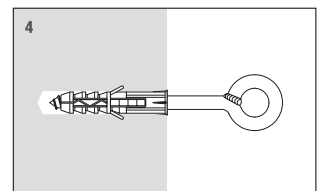
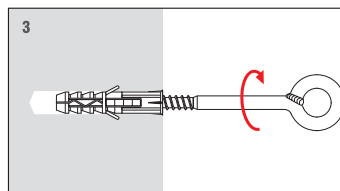
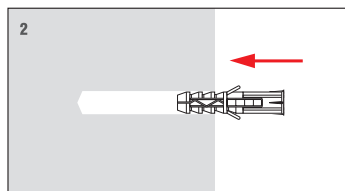
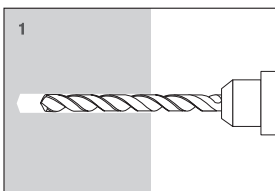
The eye made from single piece of wire which improves safety in use.

### Greater strength

Due to its high strength it can be used for scaffolding installation.



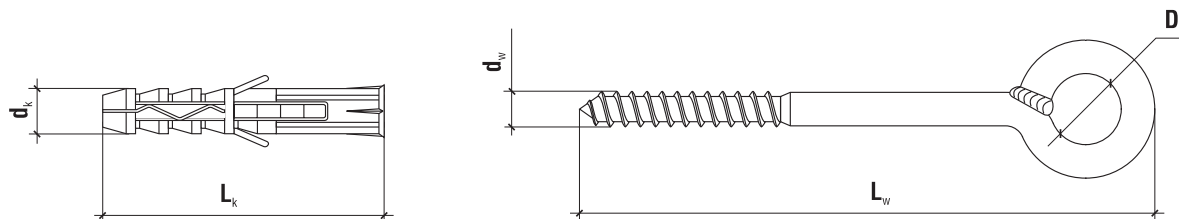
## Installation



### TECHNICAL DATA

Product marking

<b>HOX</b>	<b>14</b>	<b>120</b>
Type	Diameter	Length



	Code	$d_k \times L_k$ [mm]	$d_w \times L_w$ [mm]	$D_o$ [mm]	Pcs
<b>ø14</b>	HOX-14120	14 x 80	10 x 165	25	20
	HOX-14160	14 x 80	10 x 205	25	20
	HOX-14190	14 x 80	10 x 235	25	20
	HOX-14230	14 x 80	10 x 275	25	20
<b>ø16</b>	HOX-16160	16 x 100	12 x 210	25	15
	HOX-16190	16 x 100	12 x 240	25	15
	HOX-16230	16 x 100	12 x 280	25	15
	HOX-16300	16 x 100	12 x 350	25	15
	HOX-16350	16 x 100	12 x 400	25	15

### TECHNICAL DATA

Parameter	Unit	HOX-14/HOX-16
Plug diameter	$d_k$ [mm]	14/16
Hole diameter	$d_o$ [mm]	14/16
Effective anchorage depth	$h_{eff}$ [mm]	80/100
Depth of drill hole	$h_o$ [mm]	90/110
Sleeve material	x	PA
Screw material	x	Zinc plated steel
Approval	x	AT-15-9031/2012

### DESIGN PULL-OUT RESISTANCE [kN]

Substrate	HOX-14	HOX-16
Concrete C20/25	9.30	16.86
Solid clay brick	4.08	2.39
Calcium silicate brick	2.35	2.65
Autoclaved aerated concrete	1.28	x

### SUBSTRATE, MINIMUM THICKNESS, DISTANCE

Plug type	Min. member thickness $h_{min}$ [mm]	Min. edge distance $c_{min}$ [mm]	Min. spacing $L_{os}$ [mm]
HOX-14	160	120	240
HOX-16	200	150	300

