

KDH / KMH

Hardened countersunk flat head wood screw with partial thread, PZ



Description

Application	Screw tempered for connections of wooden and wood-derived elements. It is also applied for connecting furniture accessories, e.g. hinges, guide grooves etc. with wooden elements, chipboard, plywood, OSB board.
Type of installation	This screw does not require prior drilling.
Substrate	Chipboard, plywood, wood, sterling board, MDF board
Material	Zinc-plated low carbon steel

Features and advantages



Wax coating

Wax coating applied during the production process significantly reduces the torque. This makes the installation easier, faster and saves energy, which is important in the case of battery-powered tools.



Countersunk head

This allows for ideally concealing the screw in the fastened element which facilitates the flow of the guide groove.



PZ drive

Commonly used PZ drive also makes installation easier



Profile of thread

Specially designed profile of thread leads to the assembly being quick, while the fastening of elements is long-lasting

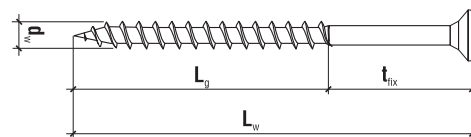


Partial thread

Partial thread prevents splitting of elements being installed and guarantees their tight fastening.



PN-EN 14592:2008
+A1:2012



PZ

How to read the code KDH-50100-B(X5)?

KDH	50	100	-B	(X5)
Screw type	Screw diameter 5,0mm	Screw length 100mm	Zinc color - blue	Packing - 5kg/box

KDH/KMH Hardened flat head wood screw with partial thread, PZ

	Kod			Kod		Szt.	d _w x L _w [mm]	L _g ^{**} [mm]	+
	Zn ZŁTY	Zn BIAŁY	kg	Zn ZŁTY	Zn BIAŁY				
ø4,0	KDH-40070(X5)	KDH-40070-B(X5)	5	KMH-40070	KMH-40070-B*	250	4,0 x 70	55	PZ 2
ø4,5	KDH-45070(X5)	KDH-45070-B(X5)	5	KMH-45070	KMH-45070-B*	250	4,5 x 70	55	PZ 2
	KDH-45080(X5)	KDH-45080-B(X5)	5	KMH-45080	KMH-45080-B*	250	4,5 x 80	55	PZ 2
ø5,0	KDH-50070(X5)	KDH-50070-B(X5)	5	KMH-50070	KMH-50070-B	200	5,0 x 70	55	PZ 2
	KDH-50080(X5)	KDH-50080-B(X5)	5	KMH-50080	KMH-50080-B	200	5,0 x 80	55	PZ 2
	KDH-50090(X5)	KDH-50090-B(X5)	5	KMH-50090	KMH-50090-B	200	5,0 x 90	55	PZ 2
	KDH-50100(X5)	KDH-50100-B(X5)	5	KMH-50100	KMH-50100-B	200	5,0 x 100	55	PZ 2
	KDH-50120(X5)	KDH-50120-B(X5)	5	KMH-50120	KMH-50120-B	100	5,0 x 120	75	PZ 2
ø6,0	KDH-60070(X5)	KDH-60070-B(X5)	5	KMH-60070	KMH-60070-B*	200	6,0 x 70	55	PZ 3
	KDH-60080(X5)	KDH-60080-B(X5)	5	KMH-60080	KMH-60080-B	200	6,0 x 80	55	PZ 3
	KDH-60090(X5)	KDH-60090-B(X5)	5	KMH-60090	KMH-60090-B*	100	6,0 x 90	55	PZ 3
	KDH-60100(X5)	KDH-60100-B(X5)	5	KMH-60100	KMH-60100-B*	100	6,0 x 100	55	PZ 3
	KDH-60110(X5)	KDH-60110-B(X5)	5	KMH-60110	KMH-60110-B*	100	6,0 x 110	75	PZ 3
	KDH-60120(X5)	KDH-60120-B(X5)	5	KMH-60120	KMH-60120-B	100	6,0 x 120	75	PZ 3
	KDH-60140(X5)	KDH-60140-B(X5)	5	KMH-60140	KMH-60140-B*	100	6,0 x 140	75	PZ 3
	KDH-60160(X5)	KDH-60160-B(X5)	5	KMH-60160	KMH-60160-B*	100	6,0 x 160	75	PZ 3
	KDH-60180(X5)	KDH-60180-B(X5)	5	KMH-60180	KMH-60180-B*	100	6,0 x 180	75	PZ 3
KDH-60200(X5)	KDH-60200-B(X5)	5	KMH-60200	KMH-60200-B*	100	6,0 x 200	75	PZ 3	

* Made to order