

# KMG Hammer-in anchor Ø5, Ø6, Ø8, Ø10 for AAC



AT-15-9018/2012



## Description

Universal metal hammer-in anchor used to work with screw-in fixings, including screws, screw-in hooks, etc.

## Technical data

Type of installation pre-fastening installation

Substrate autoclaved aerated concrete

Sleeve material/protective coating

Blue  
zinc

## Features and advantages of the product



### Ribbed design

Easy screw tightening, outer teeth allow for transfer of heavy loads.



### Steel anchor

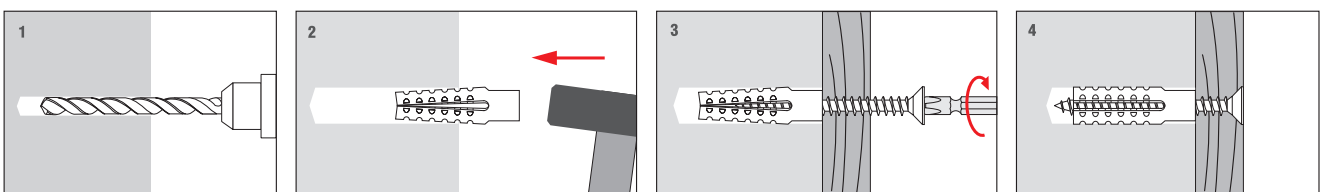
High resistance to fire, class A1 fire rating (fireproof).

### Fixing of drywall grid systems

Used for load-bearing drywall grid systems.



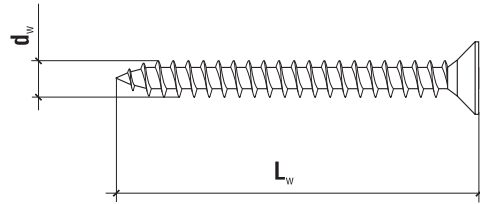
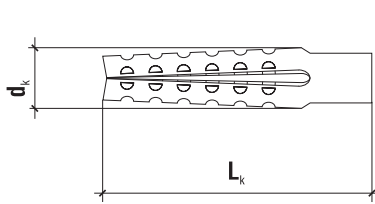
## Installation



Product marking

<b>KMG</b>	<b>05</b>
Type	Diameter

## TECHNICAL DATA



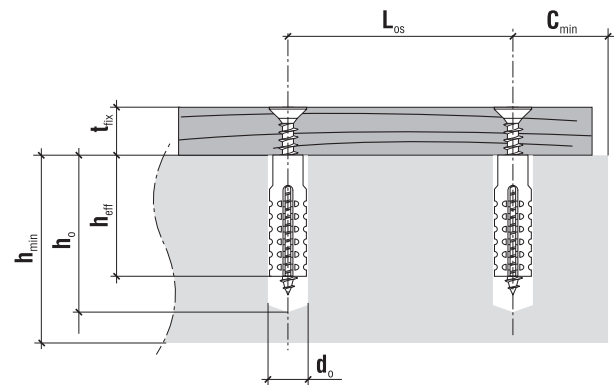
PZ

	Code	$d_k \times L_k$ [mm]	$d_w$ [mm]	Pcs
<b>ø5</b>	KMG-05	5.0 x 30	4.5	200
<b>ø6</b>	KMG-06	6.0 x 32	4.5 - 5.0	200
<b>ø8</b>	KMG-08	8.0 x 36	5.0 - 6.0	100
	KMG-08-D	8.0 x 60	5.0 - 6.0	50
<b>ø10</b>	KMG-10	10 x 60	6.0 - 8.0	50

### TECHNICAL DATA

Parameter	Unit	KMG
Plug diameter	$d_k$ [mm]	5/6/8/10
Hole diameter	$d_o$ [mm]	5/6/8/10
Effective anchorage depth	$h_{eff}$ [mm]	30/32/36/60/60*
Depth of drill hole	$h_o$ [mm]	40/40/45/70/70*
Sleeve material	x	Zinc plated steel
Approval	x	AT-15-9018/2012

\* for KMG-8D - long



### DESIGN PULL-OUT RESISTANCE [kN]

KMG	Substrate: autoclaved aerated concrete
KMG-5	0.21
KMG-6	0.34
KMG-8	0.59
KMG-8D (long)	1.72
KMG-10	2.39

### SUBSTRATE, MINIMUM THICKNESS, DISTANCE

Substrate	Min. member thickness $h_{min}$ [mm]	Min. edge distance $c_{min}$ [mm]	Min. spacing $L_{os}$ [mm]
KMG-5	60	60	120
KMG-6	60	60	120
KMG-8	70	70	140
KMG-8D	120	120	240
KMG-10	120	120	240