

KRX

Expansion plug $\varnothing 6, \varnothing 8, \varnothing 10, \varnothing 12$ with countersunk head screw for fixing of wood members.



AT-15-9031/2012



Description

Expansion plug with countersunk head screw for fixing of wood members

Technical data

Type of installation pre-fastening installation

Substrate concrete, solid clay brick, calcium silicate brick, autoclaved aerated concrete

Sleeve material/protective coating

PP
polypropylene

Blue zinc

Features and advantages of the product



Anti-rotation elements

Special lugs and protrusions hold the sleeve in place and prevent its rotation during tightening of the screw.

Short expansion zone

Enables installation in solid building materials.

Screw-in installation

Screw-in installation helps tighten the screw to the required depth.

Extensive size range

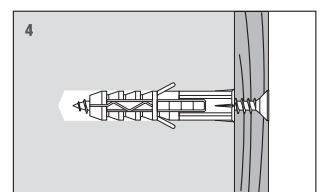
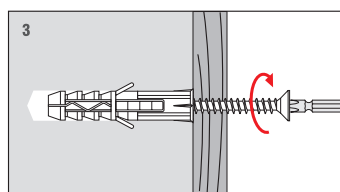
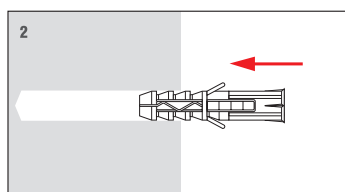
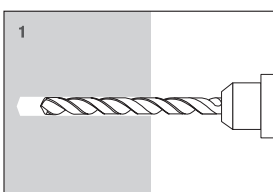
For a variety of applications ranging from skirting boards to lightweight building equipment.

KPX, KNX sleeves available

You can re-use the screw with KPX or KNX sleeve.



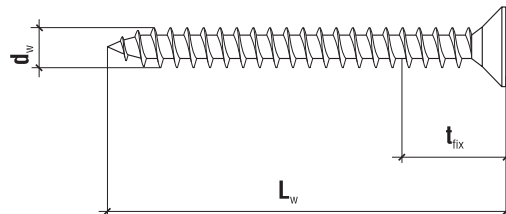
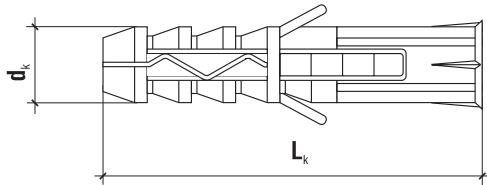
Installation



TECHNICAL DATA

Product marking

KRX	06	3530
Type	Diameter	Diameter/ length



PZ-2
PZ-3

	Code	$d_k \times L_k$ [mm]	$d_w \times L_w$ [mm]	Max. fixture thickness t_{fix} [mm]	PZ	Pcs
ø6	KRX-063530	6 x 30	3.5 x 30	1	PZ-2	200
	KRX-063535	6 x 30	3.5 x 35	5	PZ-2	200
	KRX-063540	6 x 30	3.5 x 40	10	PZ-2	200
	KRX-063550	6 x 30	3.5 x 50	20	PZ-2	200
ø8	KRX-084040	8 x 40	4.0 x 40	1	PZ-2	100
	KRX-084045	8 x 40	4.0 x 45	5	PZ-2	100
	KRX-084050	8 x 40	4.0 x 50	10	PZ-2	100
	KRX-084060	8 x 40	4.0 x 60	20	PZ-2	100
	KRX-085050	8 x 50	5.0 x 50	1	PZ-2	100
	KRX-085060	8 x 50	5.0 x 60	10	PZ-2	100
	KRX-085070	8 x 50	5.0 x 70	20	PZ-2	100
	KRX-085080	8 x 50	5.0 x 80	30	PZ-2	100
	KRX-0850100	8 x 50	5.0 x 100	50	PZ-2	100
ø10	KRX-105050	10 x 50	5.0 x 50	1	PZ-2	100
	KRX-105060	10 x 50	5.0 x 60	10	PZ-2	100
	KRX-105070	10 x 50	5.0 x 70	20	PZ-2	100
	KRX-105080	10 x 50	5.0 x 80	30	PZ-2	100
	KRX-1050100	10 x 50	5.0 x 100	50	PZ-2	100
	KRX-106060	10 x 60	6.0 x 60	1	PZ-3	100
	KRX-106070	10 x 60	6.0 x 70	10	PZ-3	100
	KRX-106080	10 x 60	6.0 x 80	20	PZ-3	100
	KRX-1060100	10 x 60	6.0 x 100	40	PZ-3	100
	KRX-1060120	10 x 60	6.0 x 120	60	PZ-3	100
ø12	KRX-126060	12 x 60	6.0 x 60	1	PZ-3	100
	KRX-126070	12 x 60	6.0 x 70	10	PZ-3	100
	KRX-126080	12 x 60	6.0 x 80	20	PZ-3	100
	KRX-1260100	12 x 60	6.0 x 100	40	PZ-3	100
	KRX-1260120	12 x 60	6.0 x 120	60	PZ-3	100

KRX

Expansion plug $\emptyset 6, \emptyset 8, \emptyset 10, \emptyset 12$ with countersunk head screw for fixing of wood members.

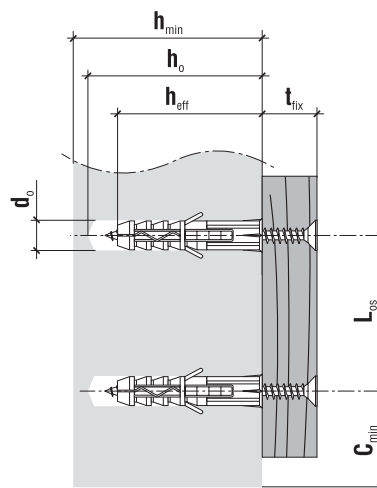
DESIGN PULL-OUT RESISTANCE [kN]

Substrate	KRX-6/30	KRX-8/40	KRX-8/50	KRX-10/50	KRX-10/60	KRX-12/60
Concrete C20/25	0.13	0.09	0.24	0.24	0.49	0.47
Solid clay brick	0.03	x	0.16	0.13	0.14	0.30
Calcium silicate brick	0.05	0.07	0.42	0.19	0.48	0.36
Autoclaved aerated concrete	x	0.02	0.12	x	0.20	x

TECHNICAL DATA

Parameter	Unit	KRX
Plug diameter	d_k [mm]	6/8/10/12
Hole diameter	d_o [mm]	6/8/10/12
Effective anchorage depth	h_{eff} [mm]	30/40/50/60
Depth of drill hole	h_o [mm]	40/50/60/70
Drive type	x	PZ-2, PZ-3*
Sleeve material	x	PP
Screw material	x	Zinc plated steel
Approval	x	AT-15-9031/2012

* - for KRX-10/6 i KRX-12



SUBSTRATE, MINIMUM THICKNESS, DISTANCE

Plug type	Min. member thickness h_{min} [mm]	Min. edge distance c_{min} [mm]	Min. spacing L_{os} [mm]
KRX-6	60	30	60
KRX-8/40	80	40	80
KRX-8, KRX-10	100	50	100
KRX-10/60, KRX-12	120	60	120