

KW

Universal plug Ø6, Ø8, Ø10 with countersunk head screw



Description

Versatile, universal expansion plug with countersunk screw for fixing of lightweight interior finish elements and lightweight installations - sleeve made of nylon

Technical data

Type of installation push-through installation

Substrate concrete, solid clay brick, perforated solid brick, plasterboard

Sleeve material/protective coating

100%
nylon

Blue
zinc

Features and advantages of the product



Anti-rotation lugs

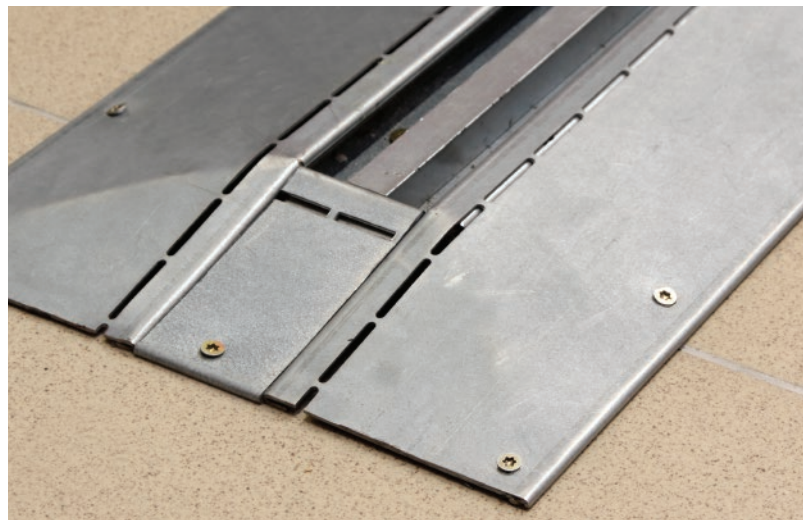
Protrusions on the sleeve keep it in place when screwing in the screw.

Nylon sleeve

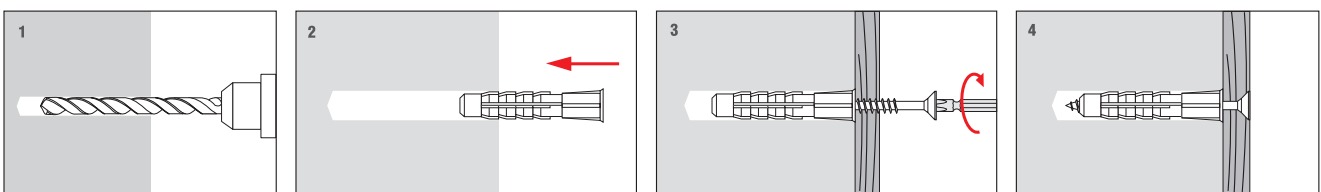
Nylon with increased elasticity ensures correct expansion in the void.

KPW sleeves available

You can re-use the screw with KPW sleeve.



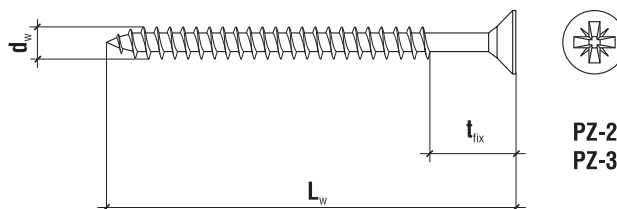
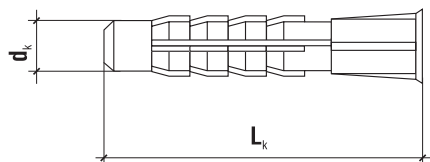
Installation



TECHNICAL DATA

Product marking

KW	06	045
Type	Diameter	Length

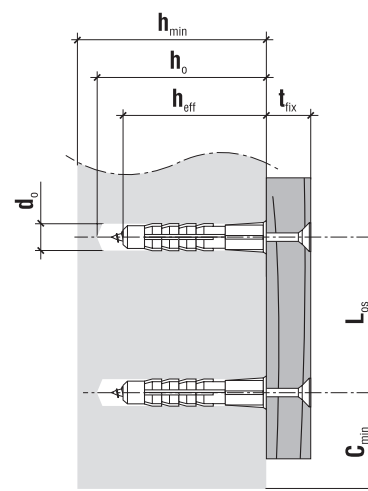


	Code	$d_k \times L_k$ [mm]	$d_w \times L_w$ [mm]	Max. fixture thickness t_{fix} [mm]	PZ	Pcs
ø6	KW-06045	6.0 x 35	3.5 x 45	5	PZ 2	100
	KW-06060	6.0 x 50	3.5 x 60	20	PZ 2	100
ø8	KW-08060	8.0 x 50	4.5 x 60	5	PZ 2	100
	KW-08080	8.0 x 50	4.5 x 80	25	PZ 2	100
ø10	KW-10080	10 x 60	6.0 x 80	15	PZ 3	100
	KW-10100	10 x 60	6.0 x 100	35	PZ 3	100

TECHNICAL DATA

Parameter	Unit	KW
Plug diameter	d_k [mm]	6/8/10
Hole diameter	d_o [mm]	6/8/10
Effective anchorage depth	h_{eff} [mm]	35/50/60*
Depth of drill hole	h_o [mm]	45/60/70*
Drive type	x	PZ-2/PZ-3**
Sleeve material	x	PA
Screw material	x	Zinc plated steel

* - for the right diameter ** - for KW-10



DESIGN PULL-OUT RESISTANCE [kN]

Substrate	KW-6	KW-8	KW-10
Concrete C20/25	0.48	0.79	1.01
Solid clay brick	0.33	0.52	0.70
Perforated solid brick	0.20	0.22	0.24
Plasterboard	0.23	0.28	0.29

SUBSTRATE, MINIMUM THICKNESS, DISTANCE

Plug type	Min. member thickness h_{min} [mm]	Min. edge distance c_{min} [mm]	Min. spacing L_{os} [mm]
KW-6	70	70	140
KW-8	100	100	200
KW-10	120	120	240