

PX Expansion plug Ø6, Ø8, Ø10, Ø12 with straight hook



AT-15-9031/2012



Description

Expansion plug with straight hook

Technical data

Type of installation pre-fastening installation

Substrate concrete, solid clay brick, calcium silicate brick, autoclaved aerated concrete

Sleeve material/protective coating

PP
polypropylene

Blue zinc

Features and advantages of the product



Anti-rotation elements

Special lugs and protrusions hold the sleeve in place and prevent its rotation during tightening of the screw

Short expansion zone

Enables installation in solid building materials.

Screw-in installation

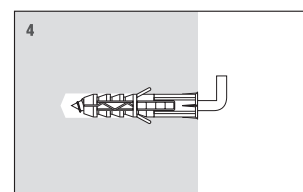
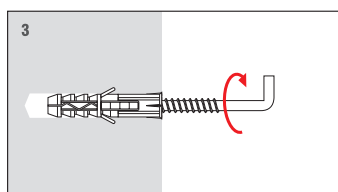
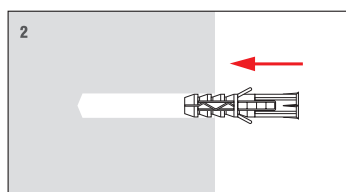
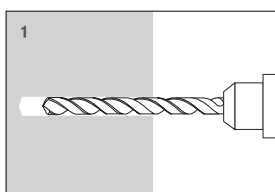
Screw-in installation helps tighten the hook to the required depth.

Screw-straight hook

Suitable for standard wall decorations.



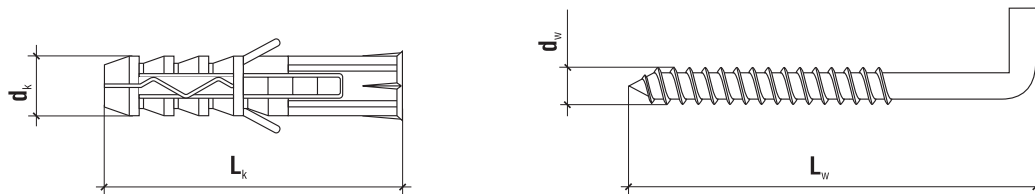
Installation



Product marking

PX	06
Type	Diameter

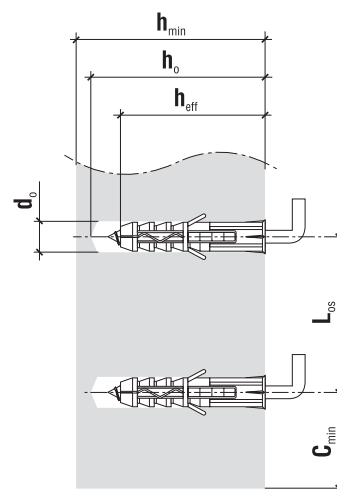
TECHNICAL DATA



	Code	$d_k \times L_k$ [mm]	$d_w \times L_w$ [mm]	Pcs
ø6	PX-06	6.0 x 30	4.0 x 40	200
ø8	PX-08	8.0 x 40	4.5 x 50	100
ø10	PX-10	10 x 50	5.5 x 60	100
	PX-10D	10 x 60	6.0 x 75	100
ø12	PX-12	12 x 60	7.5 x 75	100
	PX-12D	12 x 80	8.0 x 100	50

TECHNICAL DATA

Parameter	Unit	PX	PX-10D/PX-12D
Plug diameter	d_k [mm]	6/8/10/12	10/12
Hole diameter	d_o [mm]	6/8/10/12	10/12
Effective anchorage depth	h_{eff} [mm]	30/40/50/60	60/80
Depth of drill hole	h_o [mm]	40/50/60/70	70/90
Sleeve material	x	PP	PP
Screw material	x	Zinc plated steel	Zinc plated steel
Approval	x	AT-15-9031/2012	AT-15-9031/2012



DESIGN PULL-OUT RESISTANCE [kN]

Substrate	PX-6	PX-8	PX-10 PX-10 D	PX-12 PX-12 D
Concrete C20/25	0.13	0.23	0.28	0.74
Solid clay brick	0.03	0.12	0.16	0.13
Calcium silicate brick	0.05	0.21	0.47	0.61
Autoclaved aerated concrete	x	0.08	0.06	0.18

SUBSTRATE, MINIMUM THICKNESS, DISTANCE

Plug type	Min. member thickness h_{min} [mm]	Min. edge distance c_{min} [mm]	Min. spacing L_{os} [mm]
PX-6	60	30	60
PX-8	80	40	80
PX-10	100	50	100
PX-10 D, PX-12	120	60	120
PX-12 D	160	80	160