

SFXL Universal plug Ø6, Ø8 with straight hook

SFXC Universal plug Ø6, Ø8 with round hook

SFXO Universal plug Ø6, Ø8 with eye-bolt



NEW!



100% pure material nylon ***



Description

Steel zinc coated hooks for lightweight interior finish elements and lightweight installations - sleeve made of nylon.

Technical data

Type of installation pre-positioned installation.

Substrate concrete, solid clay brick, perforated solid brick, calcium silicate brick, autoclaved aerated concrete, plasterboards, concrete panels.

Sleeve material/protective coating

100% nylon

Blue zinc

Features and advantages of the product



Reduced diameter of the bottom part
- facilitates installation in the drill hole.



Special ribs
- a new solution which holds the sleeve firmly in place.

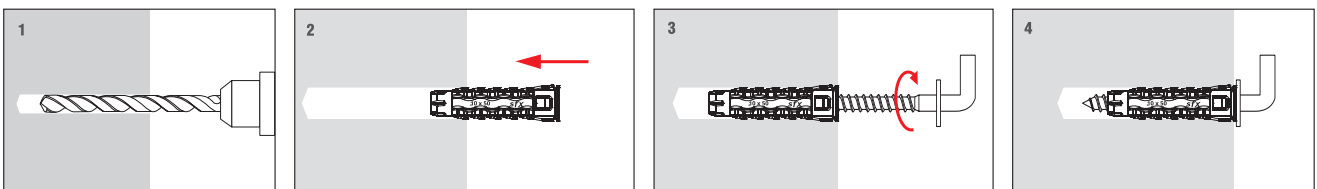


Unique shape
- ensures a 'knot' is formed, which makes the plug sit firmly in the void.



Increased collar diameter
- prevents the plug from sinking into the substrate.

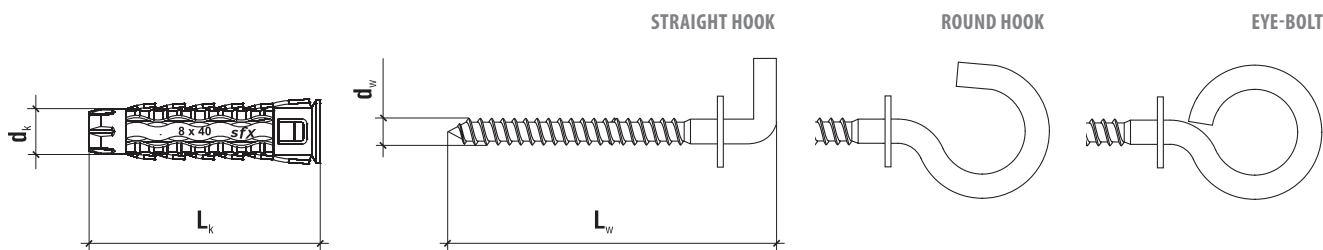
Installation



TECHNICAL DATA

Product marking

SFXL	SFXC	SFXO	06	030	064
Type	Type	Type	Diameter	Length	Hook length



Code	$d_k \times L_k$ [mm]	$d_w \times L_w$ [mm]	Pcs
STRAIGHT HOOK			
Ø6 SFXL-06030048	6.0 x 30	3.5 x 48	50
Ø8 SFXL-08040065	8.0 x 40	4.5 x 65	25
ROUND HOOK			
Ø6 SFXC-06030065	6.0 x 30	3.5 x 65	50
Ø8 SFXC-08040083	8.0 x 40	4.5 x 83	25
EYE-BOLT			
Ø6 SFXO-06030064	6.0 x 30	3.5 x 64	50
Ø8 SFXO-08040085	8.0 x 40	4.5 x 85	25

TECHNICAL DATA

Parameter	Unit	Value
Plug diameter	d_k [mm]	6/8
Hole/drill diameter	d_o [mm]	6/8
Effective anchorage depth	h_{eff} [mm]	30/40
Depth of drill hole	h_o [mm]	40/50
Drive type	x	-
Sleeve material	x	PA
Screw material	x	Zinc plated steel
Approval	x	AT-15-9702/2016

DESIGN PULL-OUT RESISTANCE [KN]

Substrate	SFXL Ø6 SFXC Ø6 SFXO Ø6	SFXL Ø8 SFXC Ø8 SFXO Ø8
Normal weight concrete class C20/25 - C50/60	0.11	0.17
Solid clay brick MZ class 20	0.22	0.33
Calcium silicate brick KS class 20	0.22	0.33
Calcium silicate hollow blocks (perforated) class 15	0.22	0.33
Hollow clay brick class 15	0.22	0.33
Autoclaved aerated concrete PP6 600/4	0.22	0.33
Plasterboards 12.5 mm	0.11	0.11
Fibreboard 12.5 mm	0.11	0.11

