

SFXL Universal plug with straight hook

SFXC Universal plug with round hook

SFXO Universal plug with eye hook



Description

Application	Steel zinc coated hooks for lightweight interior finish elements and lightweight installations - plug sleeve made of nylon
Type of installation	Pre-fastening installation
Substrate	Concrete, solid clay brick, perforated solid brick, calcium silicate brick, autoclaved aerated concrete, plasterboards, concrete panels
Material	Sleeve: 100% NYLON; Screw: Zinc-plated low carbon steel

Features and advantages



Reduced diameter of the bottom part
- facilitates installation in the drill hole.



Special ribs
- a new solution which holds the sleeve firmly in place.



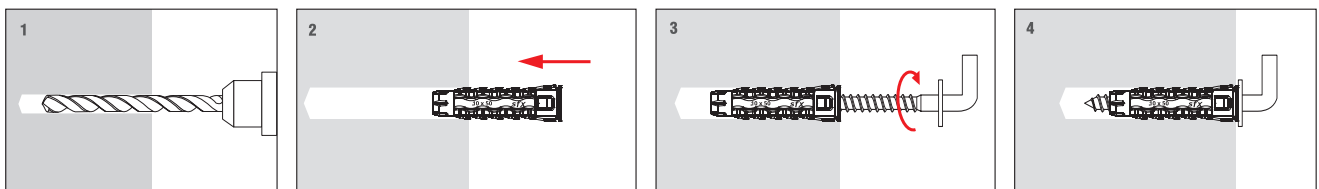
Unique shape
- ensures a 'knot' is formed, which makes the plug sit firmly in the void.



Increased collar diameter
- prevents the plug from sinking into the substrate.



Installation



TECHNICAL DATA

How to read the code?

SFXL	SFXC	SFXO	06	030	064
Type	Type	Type	Diameter	Length	Hook length

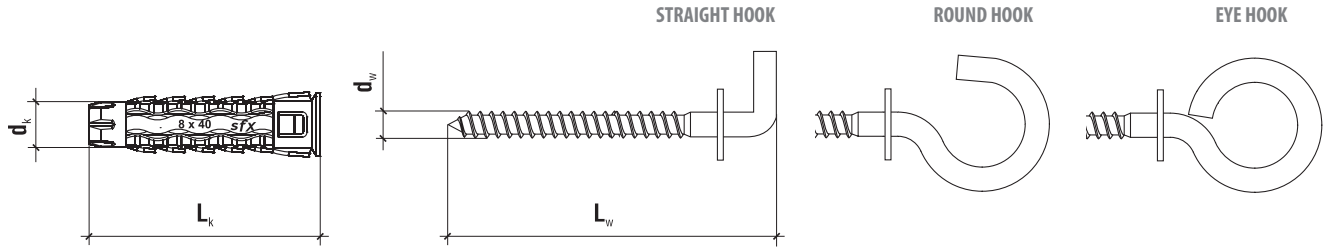


Diagram	Code	$d_k \times L_k$ [mm]	$d_w \times L_w$ [mm]	Pcs
	06 SFXL-06030048	6,0 x 30	3,5 x 48	50
	08 SFXL-08040065	8,0 x 40	4,5 x 65	25
	06 SFXC-06030065	6,0 x 30	3,5 x 65	50
	08 SFXC-08040083	8,0 x 40	4,5 x 83	25
	06 SFXO-06030064	6,0 x 30	3,5 x 64	50
	08 SFXO-08040085	8,0 x 40	4,5 x 85	25

TECHNICAL DATA

Parameter	Unit	Value
Plug diameter	d_k [mm]	6/8
Hole/drill diameter	d_o [mm]	6/8
Effective anchorage depth	h_{eff} [mm]	30/40
Depth of drill hole	h_o [mm]	40/50
Drive type	x	-
Sleeve material	x	PA
Screw material	x	Zinc plated steel
Approval	x	AT-15-9702/2016

DESIGN PULL-OUT RESISTANCE [KN]

Substrate	06	08
Normal weight concrete class C20/25 - C50/60	0.11	0.17
Solid clay brick MZ class 20	0.16	0.24
Calcium silicate brick KS class 20	0.16	0.24
Calcium silicate hollow blocks (perforated) class 15	0.16	0.24
Hollow clay brick class 15	0.16	0.24
Autoclaved aerated concrete PP6 600/4	0.20	0.30
Plasterboards 12.5 mm	0.10	0.10
Fibreboard 12.5 mm	0.10	0.10

