

**SMGP** (DIN 933, ISO 4017, PN 82105)

**Hex head full thread bolt Class 5.8**



Description

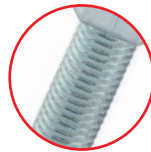
Application	For connecting light metal constructions, wooden elements with metal elements, wooden elements with plastic elements, e.g. furniture handles.
Type of installation	Prior to fastening the bolt, it is first of all required to bore a hole.
Material	Zinc-plated low carbon steel. Class 5.8, Class of precision of execution of bolt: A, tolerance of thread 6g

Features and advantages



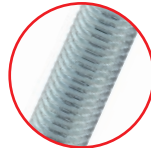
**Hex head**

Hex head improves the holding power of the connections and makes it possible to install metal elements



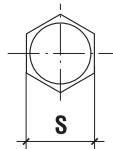
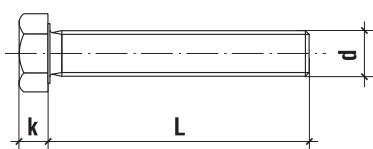
**Full thread**

Full thread provides maximum efficiency of connection when installing thin elements.



**Normalized metric thread**

High resistance of connection due to high angle of thread and inertia reel.




How to read the code SMGP-08016(X3)?

<b>SMGP</b>	<b>08</b>	<b>016</b>	<b>(X3)</b>
Bolt type	Bolt diameter 8,0mm	Bolt length 16mm	Packing 3kg

# FASTENING SYSTEMS FOR FURNITURE SECTOR

## BOLTS AND SCREWS - PRODUCTION PROGRAMME

	Code	d x L [mm]	k [mm]	s [mm]	
<b>M5</b>	SMGP-05016(X3)	5 x 16	3,5	8	3
	SMGP-05020(X3)	5 x 20			3
	SMGP-05025(X3)	5 x 25			3
	SMGP-05030(X3)	5 x 30			3
	SMGP-05035(X3)	5 x 35			3
	SMGP-05040(X3)	5 x 40			3
	SMGP-05050(X3)	5 x 50			3
<b>M6</b>	SMGP-06016(X3)	6 x 16	4,0	10	3
	SMGP-06020(X3)	6 x 20			3
	SMGP-06025(X3)	6 x 25			3
	SMGP-06030(X3)	6 x 30			3
	SMGP-06035(X3)	6 x 35			3
	SMGP-06040(X3)	6 x 40			3
	SMGP-06050(X3)	6 x 50			3
	SMGP-06060(X3)	6 x 60			3
	SMGP-06070(X3)	6 x 70			3
	SMGP-06080(X3)	6 x 80			3
<b>M8</b>	SMGP-08016(X3)	8 x 16	5,3	13	3
	SMGP-08020(X3)	8 x 20			3
	SMGP-08025(X3)	8 x 25			3
	SMGP-08030(X3)	8 x 30			3
	SMGP-08035(X3)	8 x 35			3
	SMGP-08040(X3)	8 x 40			3
	SMGP-08050(X3)	8 x 50			3
	SMGP-08060(X3)	8 x 60			3
	SMGP-08070(X3)	8 x 70			3
	SMGP-08080(X3)	8 x 80			3
<b>M10</b>	SMGP-10020(X3)	10 x 20	6,4	17*	3
	SMGP-10025(X3)	10 x 25			3
	SMGP-10030(X3)	10 x 30			3
	SMGP-10035(X3)	10 x 35			3
	SMGP-10040(X3)	10 x 40			3
	SMGP-10050(X3)	10 x 50			3
	SMGP-10060(X3)	10 x 60			3
	SMGP-10070(X3)	10 x 70			3
	SMGP-10080(X3)	10 x 80			3
	SMGP-10100(X3)	10 x 100			3
<b>M12</b>	SMGP-12020(X3)	12 x 20	7,5	19*	3
	SMGP-12025(X3)	12 x 25			3
	SMGP-12030(X3)	12 x 30			3
	SMGP-12035(X3)	12 x 35			3
	SMGP-12040(X3)	12 x 40			3
	SMGP-12050(X3)	12 x 50			3
	SMGP-12060(X3)	12 x 60			3
	SMGP-12070(X3)	12 x 70			3
	SMGP-12080(X3)	12 x 80			3
	SMGP-12100(X3)	12 x 100			3
<b>M16</b>	SMGP-16025(X3)	16 x 25	10,0	24	3
	SMGP-16030(X3)	16 x 30			3
	SMGP-16040(X3)	16 x 40			3
	SMGP-16050(X3)	16 x 50			3
	SMGP-16060(X3)	16 x 60			3
	SMGP-16070(X3)	16 x 70			3
	SMGP-16080(X3)	16 x 80			3
	SMGP-16100(X3)	16 x 100			3
<b>M20</b>	SMGP-20040(X3)	20 x 40	12,5	30	3
	SMGP-20050(X3)	20 x 50			3
	SMGP-20060(X3)	20 x 60			3
	SMGP-20070(X3)	20 x 70			3
	SMGP-20080(X3)	20 x 80			3
	SMGP-20100(X3)	20 x 100			3

\* deviation from PN-EN ISO 4017