

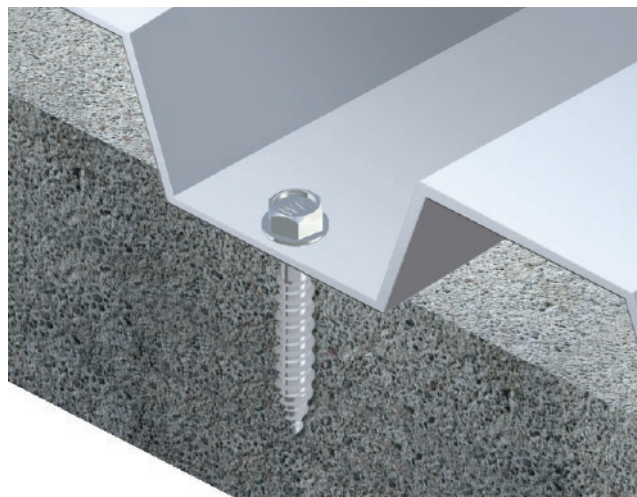
WB6 Self-tapping screw for fixing steel sheets to concrete and timber



ETA-16/0443



AT-15-7179/2013



Description

Carbon-steel self-tapping screw for fixing steel sheets and steel profiles in concrete and timber.

Protective coating / Material



Technical parameters

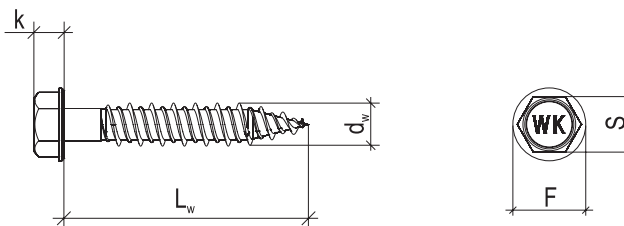
Screw diameter	d_w [mm]	6.3
Drilling capacity	t_{max} [mm]	-
Spanner size (S)	-	SW 8
Head height	k [mm]	5.3
Head diameter	F [mm]	10.5
Tip length	[mm]	-
Screw material	WB6/WB6-D	heat-treated carbon steel
Protective coating	WB6	galvanized zinc coating min. 12µm
	WB6-D	ceramic coating SQ
Substrate material	concrete, timber	min. C20/25; C24
Technical approval	[-]	ETA-16/0443 (timber)
		AT-15-7179/2013 (concrete)

Features and advantages




Self-threading tip	Facilitates direct fixing into wooden and concrete flooring (in the case of concrete, it is necessary to make a preliminary hole of 5 mm)
Branding of head of screw	WK feature at head of the screw facilitates the identification of our company as the producer and easy recognition of the product
Anti-corrosion coating - electro-galvanized (WB6)	Thickness of zinc coating min. 12 µm, guarantee of quality and high level of anti-corrosion protection
Anti-corrosion coating - ceramic coating (WB6-D)	Very high level of anti-corrosion protection (several times higher than the traditional galvanization)

Installation parameters

Screw diameter	d_w [mm]	6.3
Pre-drilled hole diameter	d_0 [mm]	5.0
Min. pre-drilled hole depth	h_0 [mm]	40
Min. substrate thickness	h_{min} [mm]	50
		concrete min. 30 mm
Anchorage depth	h_{eff} [mm]	timber min. 30 mm
Min. spacing	s_{min} [mm]	150
Min. edge distance	c_{min} [mm]	100



WB6 **Self-tapping screw for fixing steel sheets to concrete and timber**

Ø6.3	Code		d _w x L _w [mm]	Max. effective length t _{fix} [mm]	Pre-drilled hole diameter d ₀ [mm]	
						
	WB6-63035	WB6-D-63035	6.3x35	5	5	250
	WB6-63045	WB6-D-63045	6.3x45	15	5	250
	WB6-63055	WB6-D-63055	6.3x55	25	5	250
	WB6-63065	WB6-D-63065	6.3x65	35	5	250

How to read the code, e.g. WB6-D-63035?

WB6	D	63	035
Type	Ceramic coating SQ	Diameter 6.3mm	Length 35mm

Characteristic pull-out / shear strength [kN]

WB6P

Anchoring depth [mm]	Steel sheet thickness [mm]							
	0.50	0.63	0.75	0.88	1.00	1.25	1.50	2.00
Timber C24 ≥ 30mm	3.13/1.35	3.13/1.70	3.13/2.10	3.13/2.10	3.13/2.10	3.13/2.10	3.13/2.10	3.13/2.10
Concrete C20/25 ≥ 30mm	0.63/1.35	0.89/1.70	1.01/2.10	1.07/2.10	1.16/2.10	1.16/2.10	1.16/2.10	1.76/2.10

Partial safety factor of 1.33 recommended