

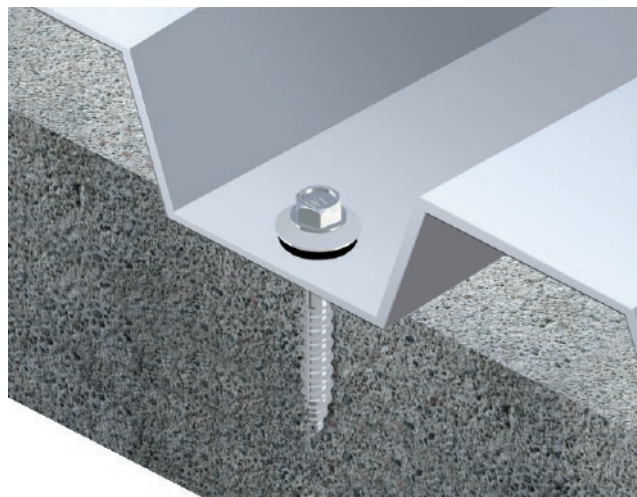
WB6P Self-tapping screw with EPDM washer for fixing steel sheets to concrete and timber



ETA-16/0443



AT-15-7179/2013



Description

Carbon-steel self-tapping screw with EPDM washer for fixing steel sheets and steel profiles in concrete and timber.

Protective coating / Material



Technical parameters

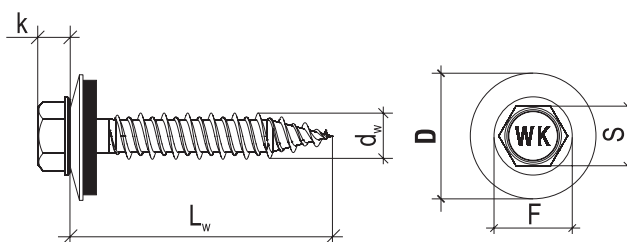
Screw diameter	d_w [mm]	6.3
Drilling capacity	t_{max} [mm]	-
Spanner size (S)	-	SW 8
Head height	k [mm]	5.3
Head diameter	F [mm]	10.5
Tip length	[mm]	-
Washer	WB6P	steel/EPDM (Z19)
	WB6P-D	aluminium/EPDM (A19) stainless/EPDM (S19)*
Screw material	WB6P/WB6P-D	heat-treated carbon steel
Protective coating	WB6P	galvanized zinc coating min. 12µm
	WB6P-D	ceramic coating SQ
Paint coating	RAL	powder min. 60 µm
Substrate material	concrete, timber	min. C20/25; C24
Technical approval	[-]	ETA-16/0443 (timber)
		AT-15-7179/2013 (concrete)

Features and advantages

Self-threading tip	Facilitates direct fixing into wooden and concrete flooring (in the case of concrete, it is necessary to make a preliminary hole of 5 mm)
EPDM washer	It seals and secures the connection from corrosion
Possibility of painting according to RAL Palette	Permanent colour adjusted to steel sheet, resistant to UV radiation and atmospheric conditions
Branding of head of screw	WK feature at head of the screw facilitates the identification of our company as the producer and easy recognition of the product
Anti-corrosion coating - electro-galvanized (WB6P)	Thickness of zinc coating min. 12 µm, guarantee of quality and high level of anti-corrosion protection
Anti-corrosion coating - ceramic coating (WB6P-D)	Very high level of anti-corrosion protection (several times higher than the traditional galvanization)








Installation parameters

Screw diameter	d_w [mm]	6.3
Pre-drilled hole diameter	d_0 [mm]	5.0
Min. pre-drilled hole depth	h_0 [mm]	40
Min. substrate thickness	h_{min} [mm]	50
Anchorage depth	h_{eff} [mm]	concrete min. 30 mm
		timber min. 30 mm
Min. spacing	s_{min} [mm]	150
Min. edge distance	c_{min} [mm]	100



* - made to order

WB6P Self-tapping screw with EPDM washer
 for fixing steel sheets to concrete and timber

	Code				$d_w \times L_w$ [mm]	Max. effective length t_{fix} [mm]	Pre-drilled hole diameter d_0 [mm]	
		 		 				
ø6.3	WB6P-63045	WB6P-63045-RAL	WB6P-D-63045	WB6P-D-63045-RAL	6.3x45	15	5	250
		made to order		made to order				

How to read the code, e.g. WB6P-D-63035-3011?

WB6P	D	63	035	3011
Type	Ceramic coating SQ	Diameter 6.3mm	Length 35mm	RAL 3011

Characteristic pull-out / shear strength [kN]

Anchoring depth [mm]	Steel sheet thickness [mm]							
	0.50	0.63	0.75	0.88	1.00	1.25	1.50	2.00
Timber C24 ≥ 30mm	3.13/1.35	3.13/1.70	3.13/2.10	3.13/2.10	3.13/2.10	3.13/2.10	3.13/2.10	3.13/2.10
Concrete C20/25 ≥ 30mm	1.76/1.35	1.76/1.70	1.76/2.10	1.76/2.10	1.76/2.10	1.76/2.10	1.76/2.10	1.76/2.10

Partial safety factor of 1.33 recommended