

WHO

Concrete frame screw $\varnothing 7.5$ with flat head, TX-30



AT-15-8977/2012

Description

Screw for fixing of e.g. window and door frames in timber and masonry.

Technical data

Type of installation push-through installation

Substrate concrete, solid clay brick, calcium silicate brick

Sleeve material/protective coating

Blue zinc

Features and advantages of the product

< 212 mm >

Screw length

We manufacture screws up to 212 mm long



TX-30 drive

TX drive guarantees optimum torque transfer.



Countersunk head with ribs

Special protrusions on the head ensure its self-sinking in the installed element whilst eliminating the need for pre-drilling.

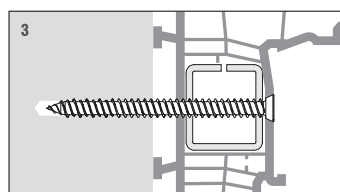
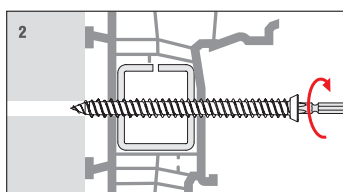
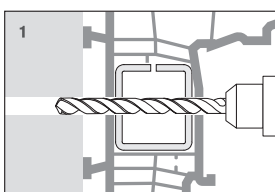


Thread serration

Thread design guarantees reliable and long-lasting connection – both in timber and masonry.



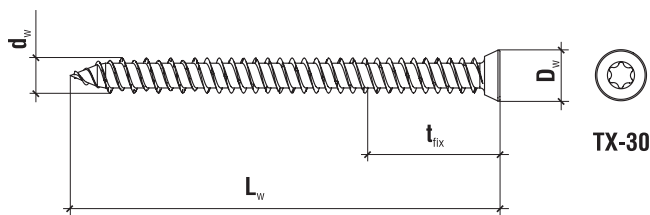
Installation



Product marking

WHO	75	042
Type	Diameter	Length

TECHNICAL DATA

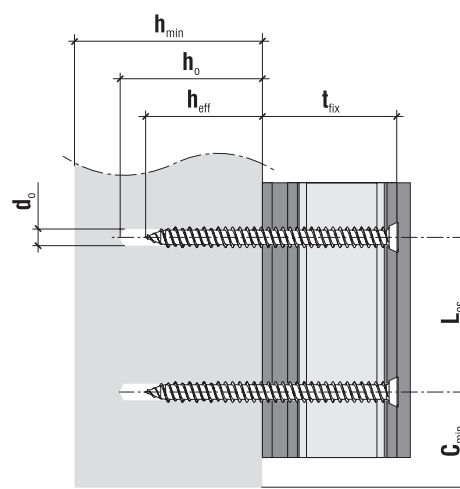


	Code	$d_w \times L_w$ [mm]	D_w [mm]	Drill hole diameter d_o [mm]	TX	Pcs
ø7.5	WHO-75042	7.5 x 42	11	6	TX-30	200
	WHO-75062	7.5 x 62	11	6	TX-30	200
	WHO-75082	7.5 x 82	11	6	TX-30	100
	WHO-75102	7.5 x 102	11	6	TX-30	100
	WHO-75112	7.5 x 112	11	6	TX-30	100
	WHO-75132	7.5 x 132	11	6	TX-30	100
	WHO-75152	7.5 x 152	11	6	TX-30	100
	WHO-75182	7.5 x 182	11	6	TX-30	100
	WHO-75212	7.5 x 212	11	6	TX-30	100

TECHNICAL DATA

Parameter	Unit	WHO
Screw diameter	d_w [mm]	7.5
Hole diameter	d_o [mm]	6
Effective anchorage depth	h_{eff} [mm]	30/40 *
Depth of drill hole	h_o [mm]	40/50 *
Drive type	x	TX-30
Screw material	x	Zinc plated steel
Approval	x	AT-15-8977/2012

* - Solid clay brick



DESIGN PULL-OUT RESISTANCE [kN]

Substrate	Anchorage depth h_{eff} [mm]	Value [kN]
Concrete C20/25*	30	1.68
Solid clay brick**	40	0.95
Calcium silicate brick***	40	0.97

*Normal weight concrete C20/25

**Solid clay brick, class not lower than 10

***Solid sand-lime brick, class not lower than 20

SUBSTRATE, MINIMUM THICKNESS, DISTANCE

Substrate	Min. member thickness h_{min} [mm]	Min. edge distance c_{min} [mm]	Min. spacing L_{os} [mm]
Concrete C20/25	60	60	120
Solid clay brick	80	80	160

