

WX Expansion plug Ø6, Ø8, Ø10, Ø12 with round hook



AT-15-9031/2012



Description

Expansion plug with round hook

Technical data

Type of installation pre-fastening installation

Substrate concrete, solid clay brick, calcium silicate brick, autoclaved aerated concrete

Sleeve material/protective coating

PP
polypropylene

Blue zinc

Features and advantages of the product



Anti-rotation elements

Special lugs and protrusions hold the sleeve in place and prevent its rotation during tightening of the screw

Short expansion zone

Enables installation in solid building materials.

Screw-in installation

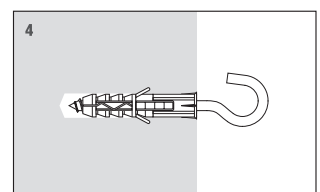
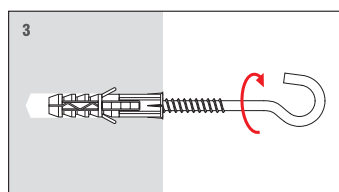
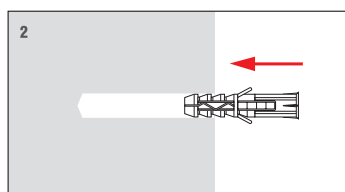
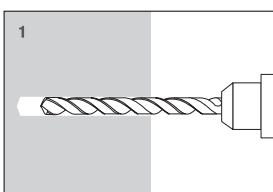
Screw-in installation helps tighten the hook to the required depth.

Screw - round hook

Suitable for standard ceiling decorations.



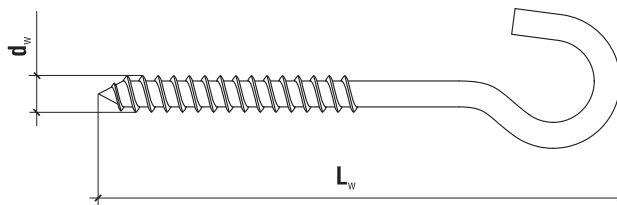
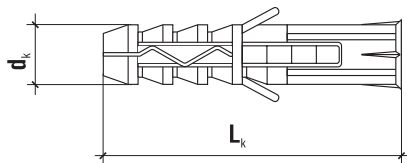
Installation



TECHNICAL DATA

Product marking

WX	06
Type	Diameter



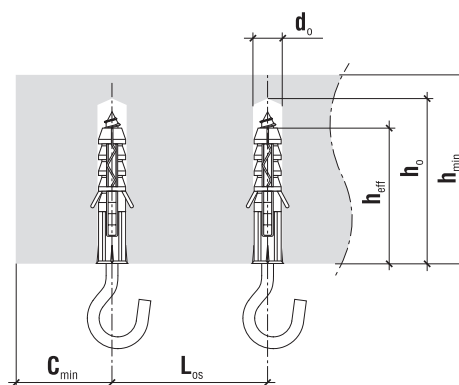
	Code	$d_k \times L_k$ [mm]	$d_w \times L_w$ [mm]	Pcs
ø6	WX-06	6.0 x 30	4.0 x 55	100
ø8	WX-08	8.0 x 40	4.5 x 65	100
ø10	WX-10	10 x 50	5.5 x 90	100
ø12	WX-12	12 x 60	7.5 x 97	100

TECHNICAL DATA

Parameter	Unit	WX
Plug diameter	d_k [mm]	6/8/10/12
Hole diameter	d_o [mm]	6/8/10/12
Effective anchorage depth	h_{eff} [mm]	30/40/50/60
Depth of drill hole	h_o [mm]	40/50/60/70
Sleeve material	x	PP
Screw material	x	Zinc plated steel
Approval	x	AT-15-9031/2012

DESIGN PULL-OUT RESISTANCE [kN]

Substrate	WX-6	WX-8	WX-10	WX-12
Concrete C20/25	0.13	0.23	0.28	0.74
Solid clay brick	0.03	0.12	0.16	0.13
Calcium silicate brick	0.05	0.21	0.47	0.61
Autoclaved aerated concrete	x	0.08	0.06	0.18



SUBSTRATE, MINIMUM THICKNESS, DISTANCE

Plug type	Min. member thickness h_{min} [mm]	Min. edge distance c_{min} [mm]	Min. spacing L_{os} [mm]
WX-6	60	30	60
WX-8	80	40	80
WX-10	100	50	100
WX-12	120	60	120